



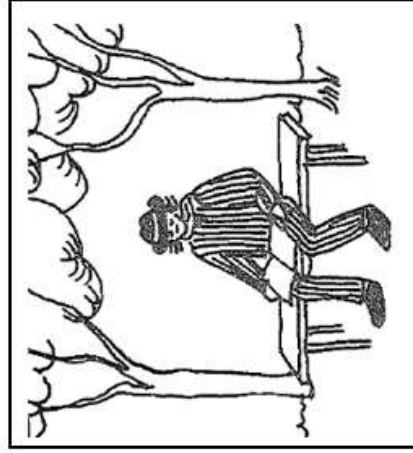
MIKROCLIMATE DESIGN

Starkstad.

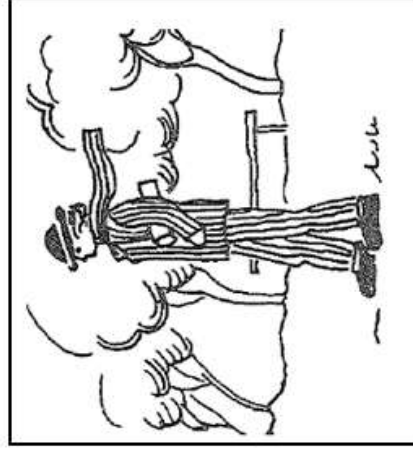
Seth von Dardel



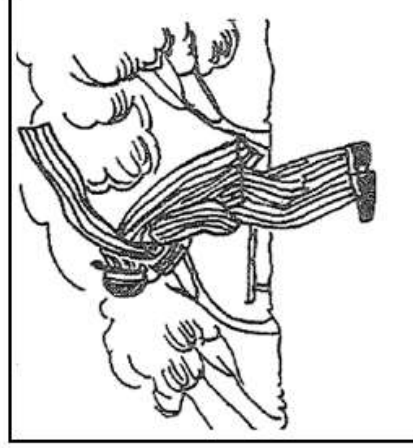




0 - 3,5 m/s



3,5 - 8 m/s



8 - 14 m/s

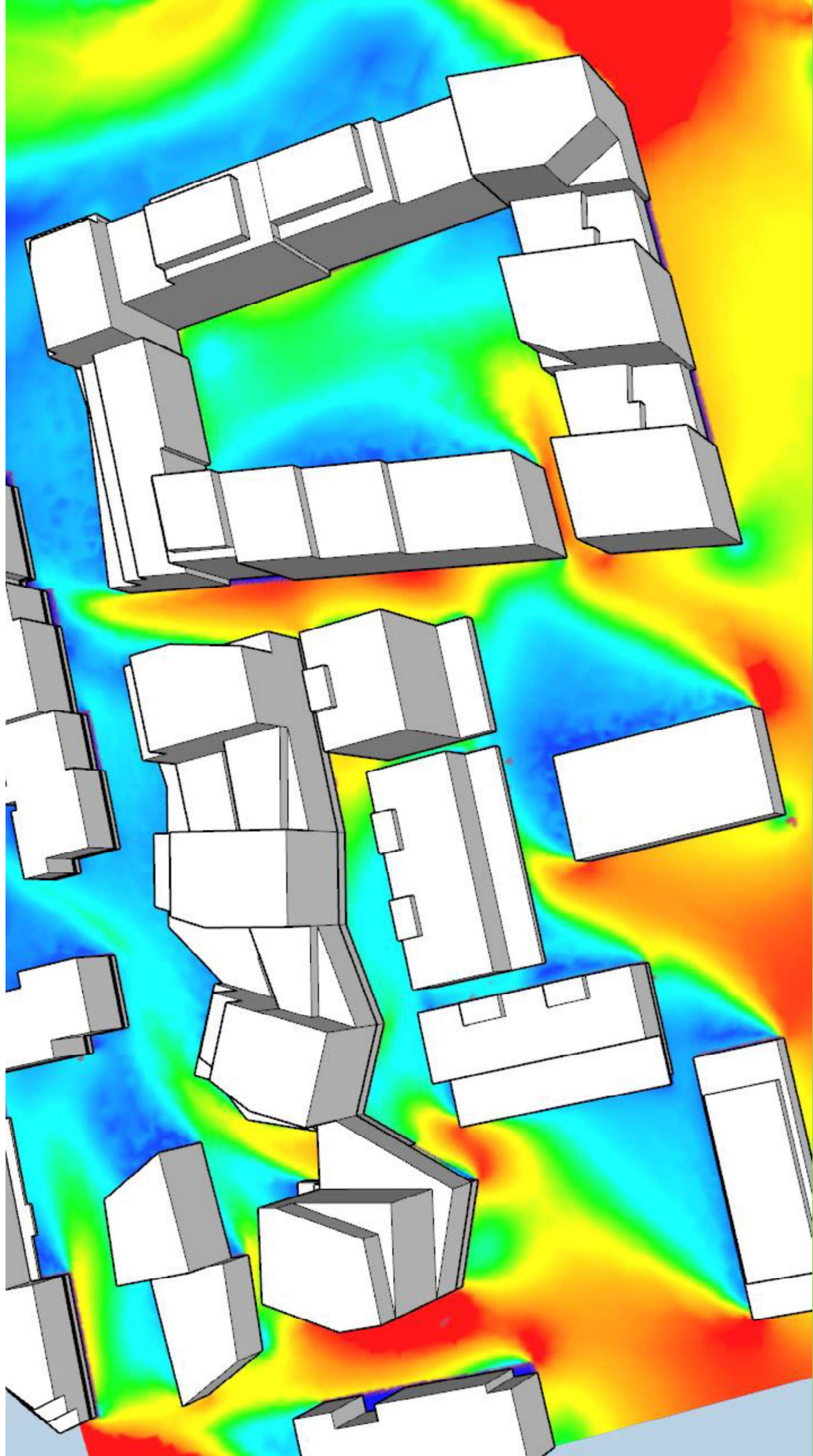


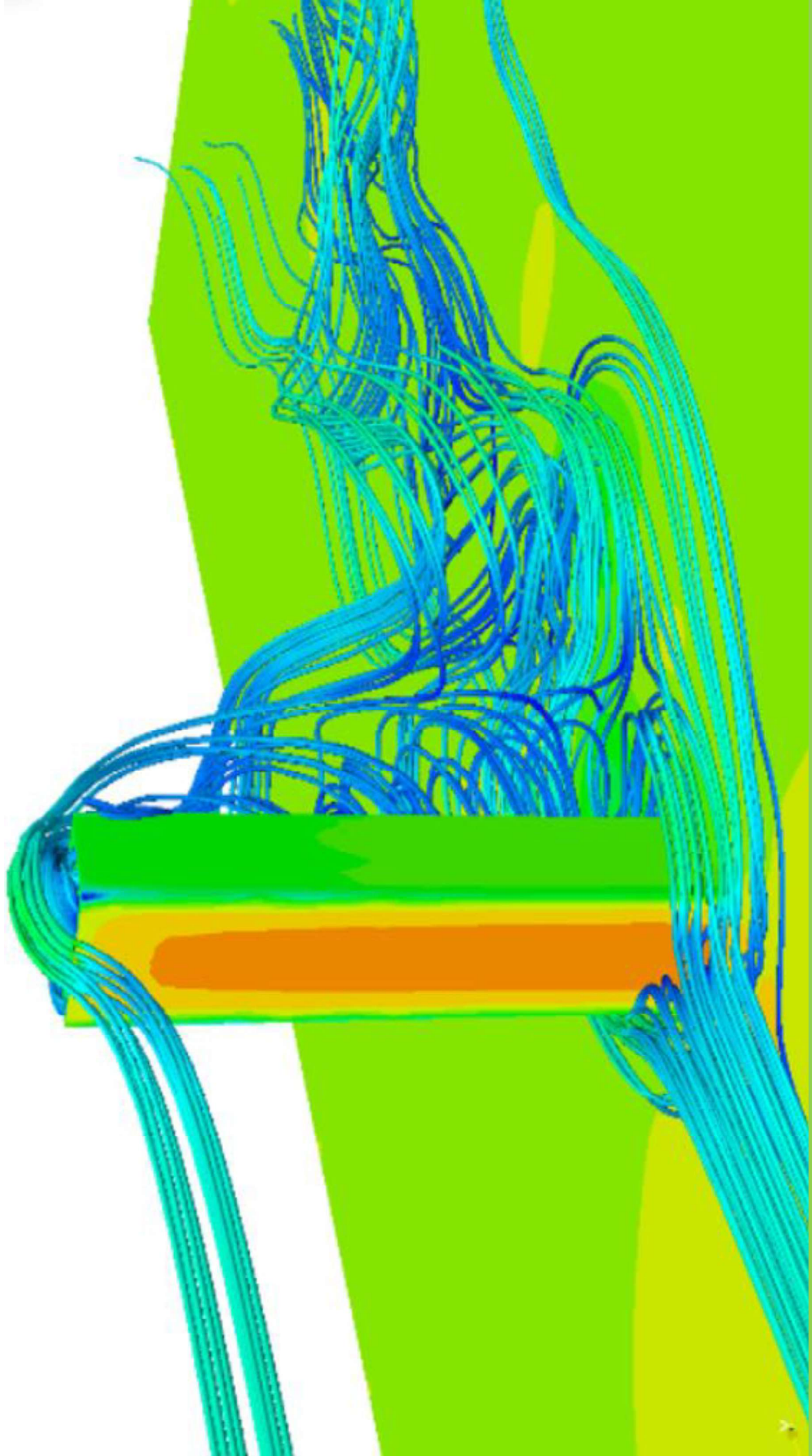
14 - 21 m/s

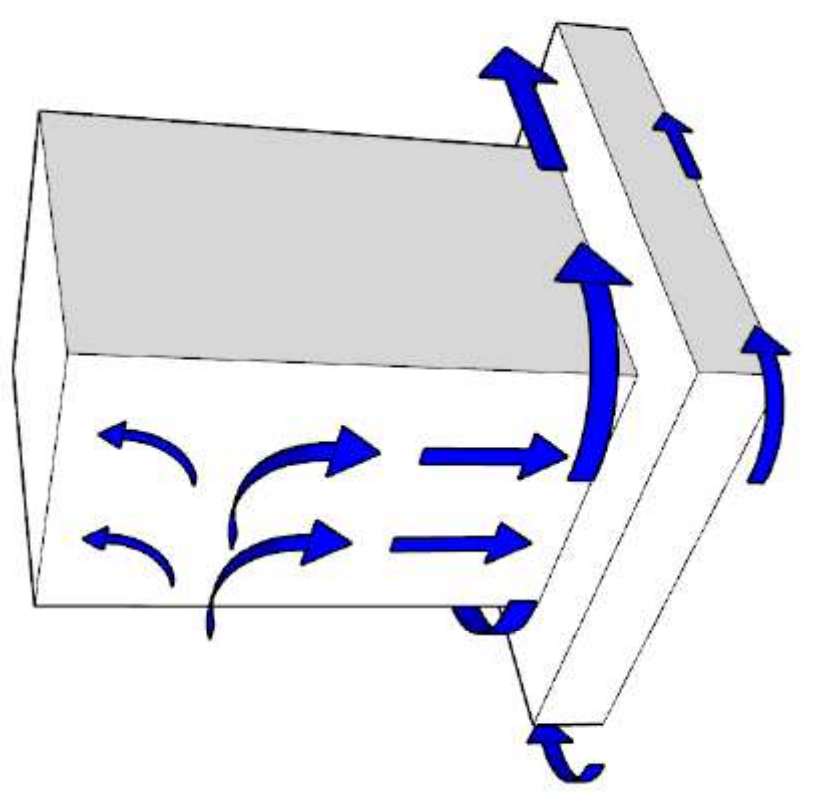
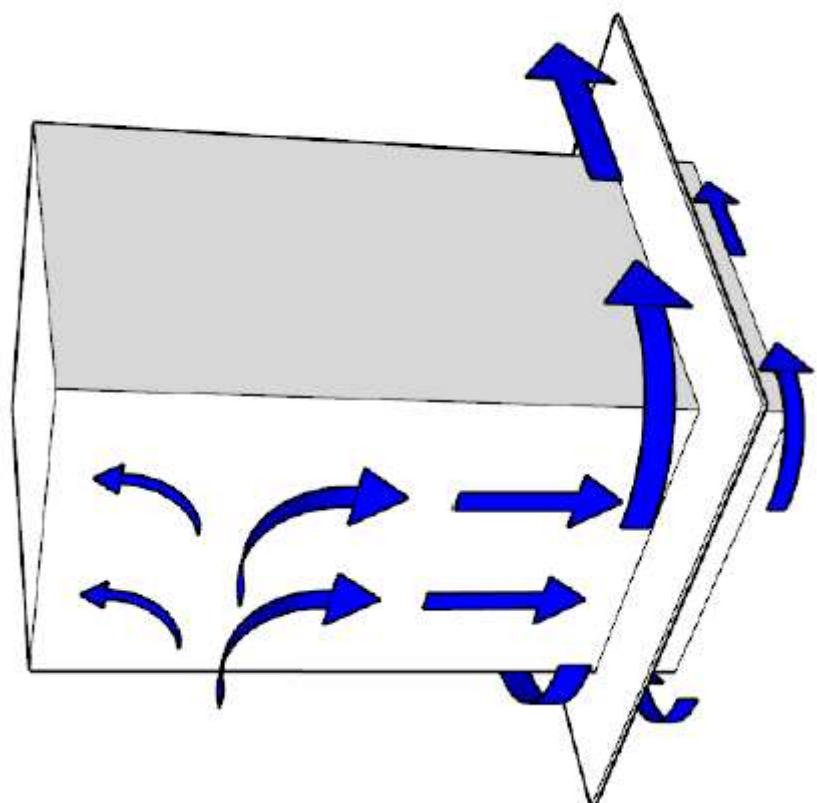
Mean velocity Fannborg: 6,0 m/s

Outdoor environment	Percentage of year with wind velocity > 5 m/s
Pedestrian and bike path	50%
Plazas and bus stops	20%
Outdoor seatings, playgrounds	0,50%

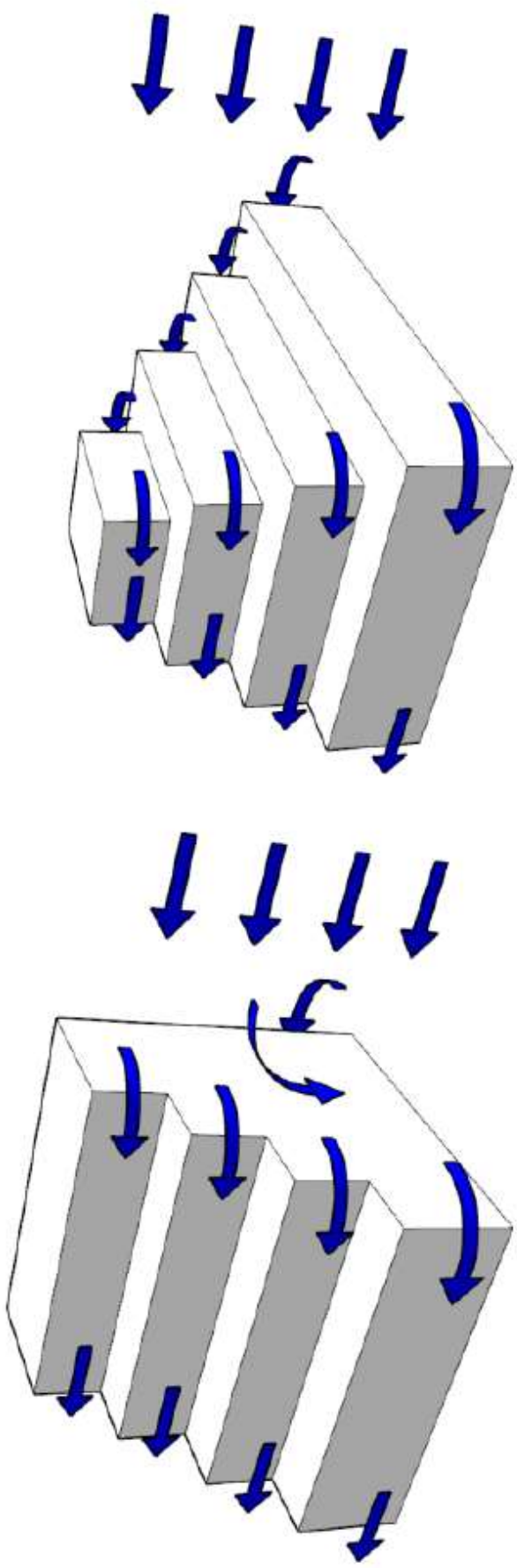
**Solar access: 5 hours per day at spring and autumnal equinox
+ particular hours**



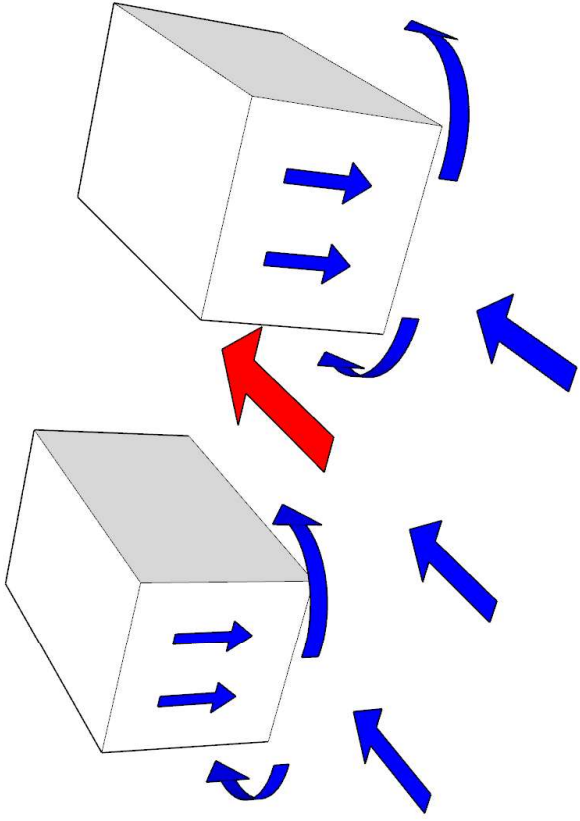
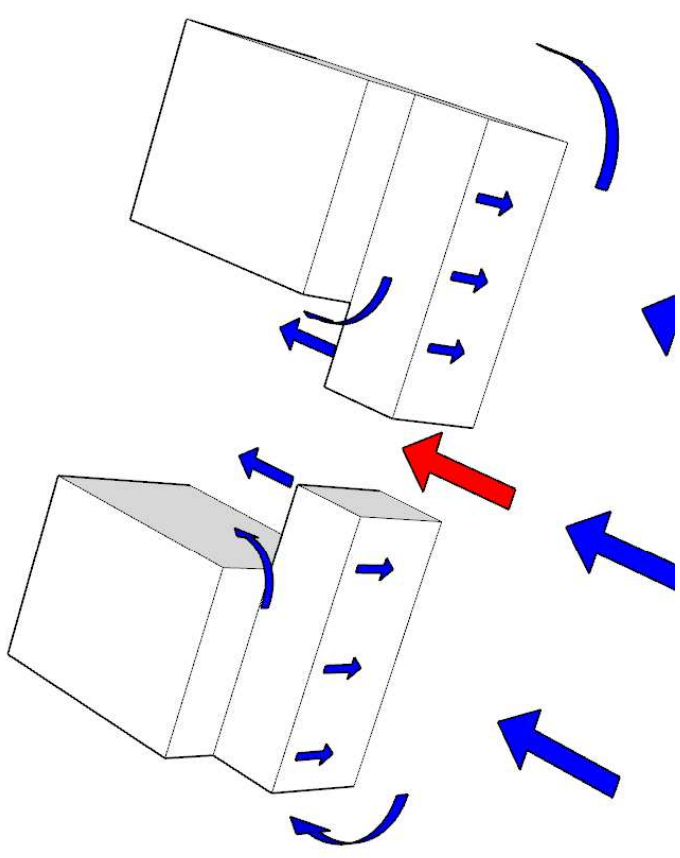


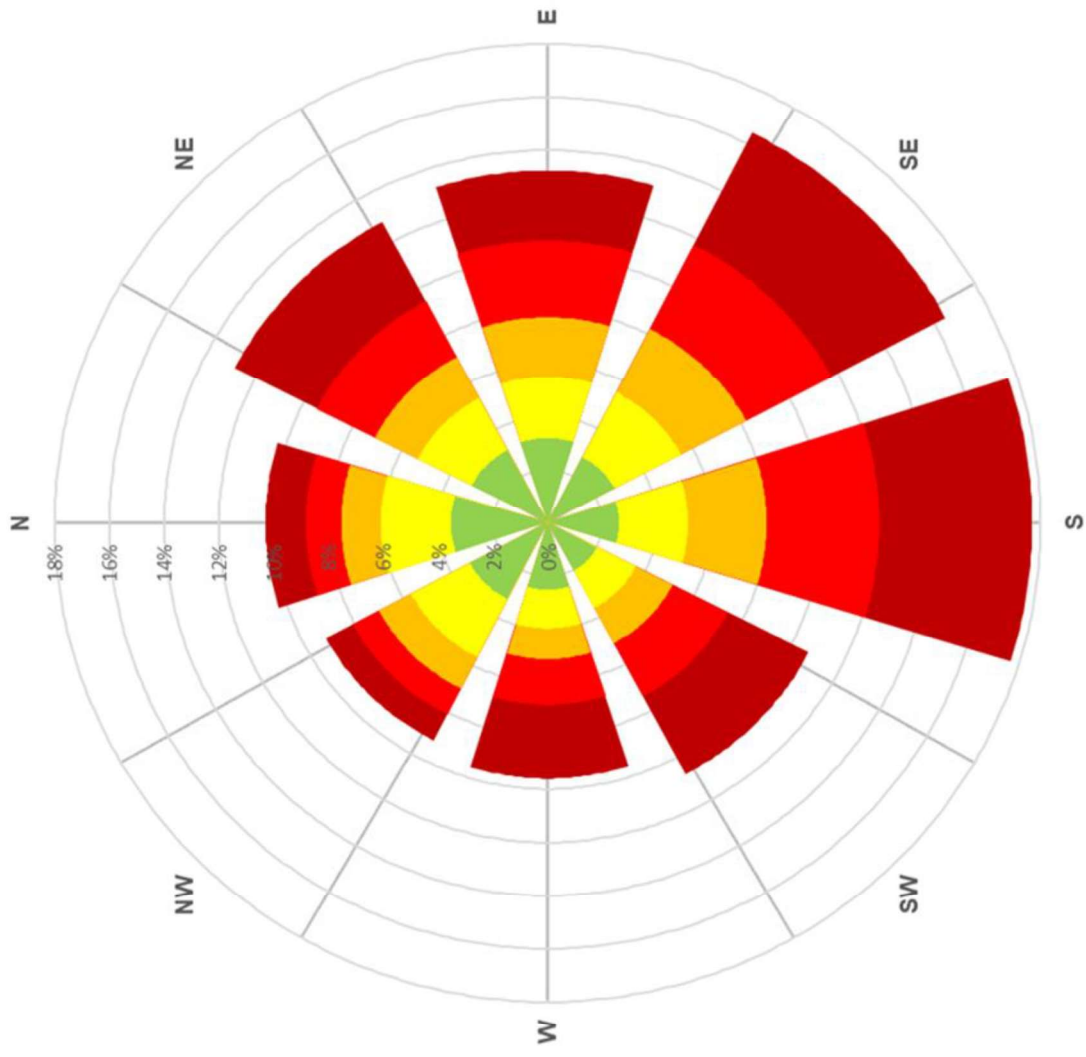


Vinddesign



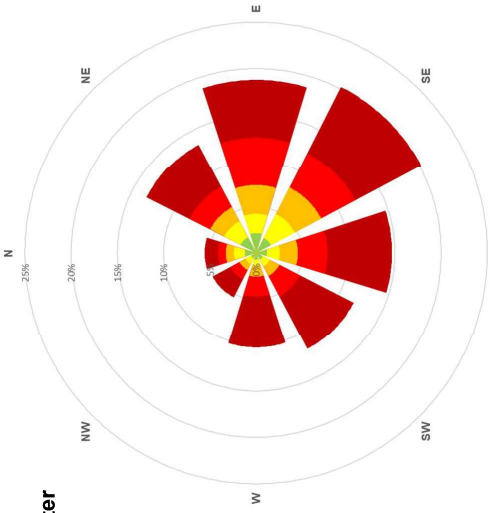
Vinddesign



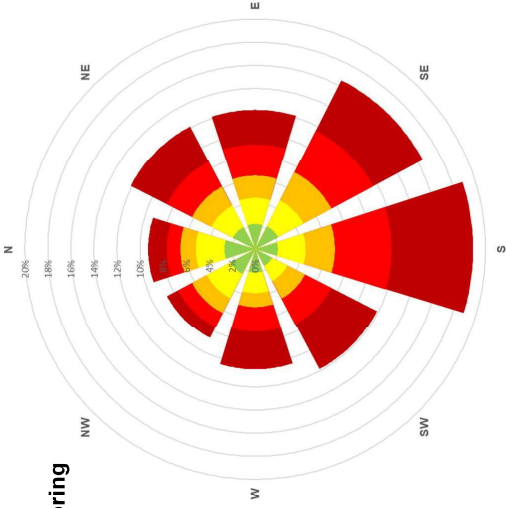


Kopavogur, 2008-2021

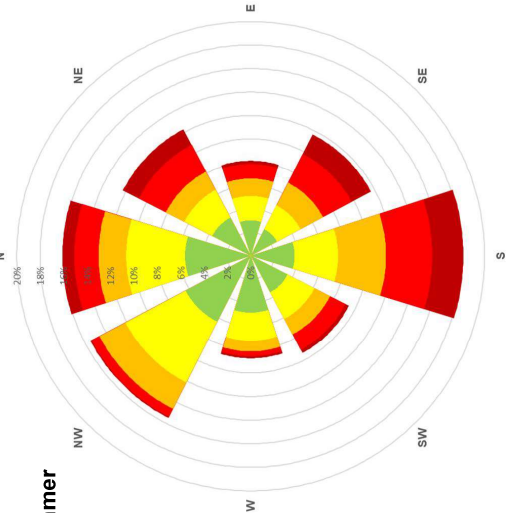
Winter



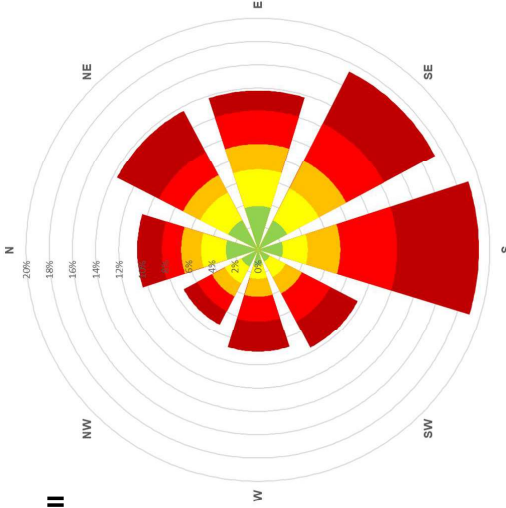
Spring



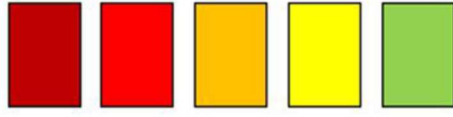
Summer

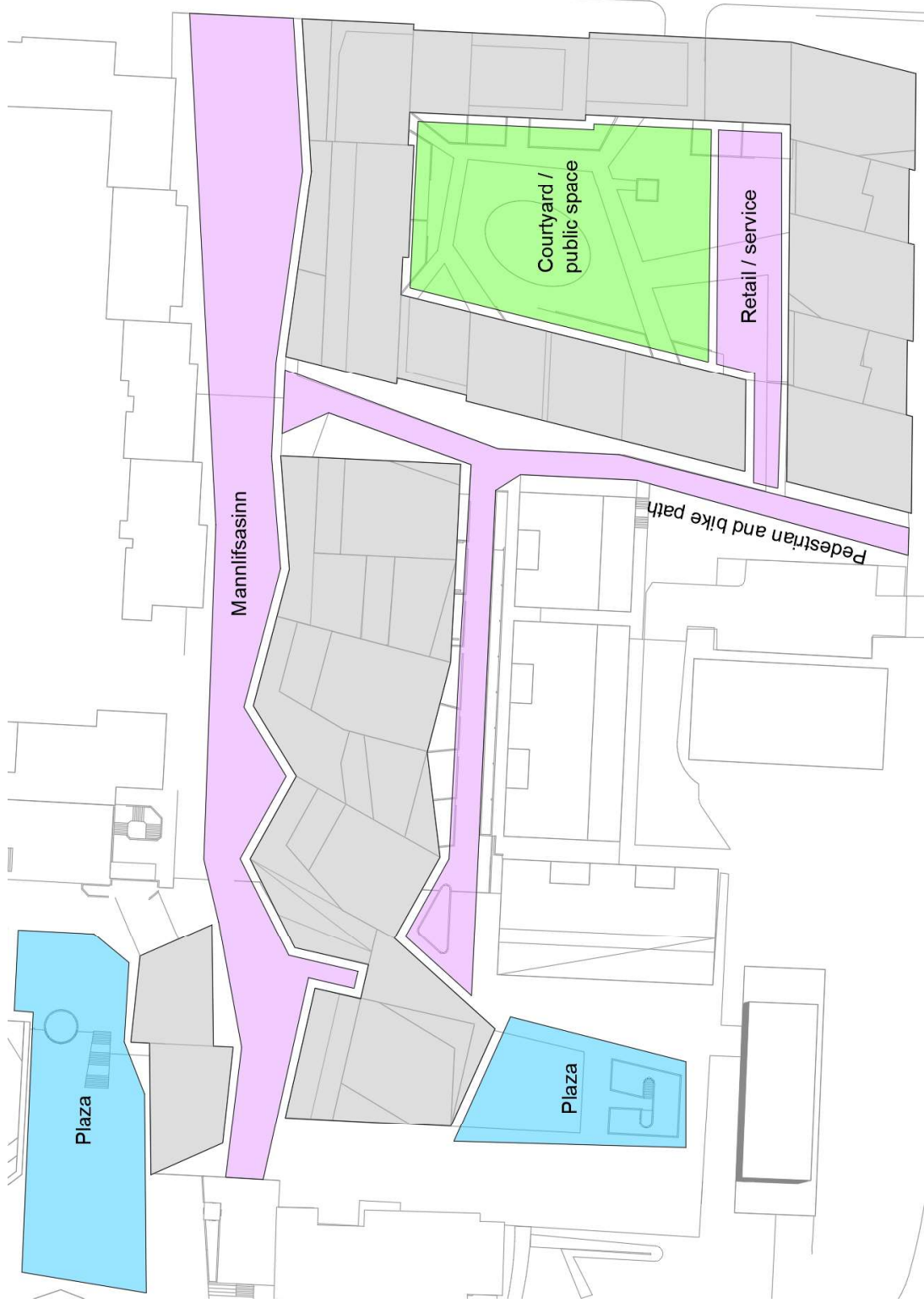


Fall



Vindhastighet
m/s





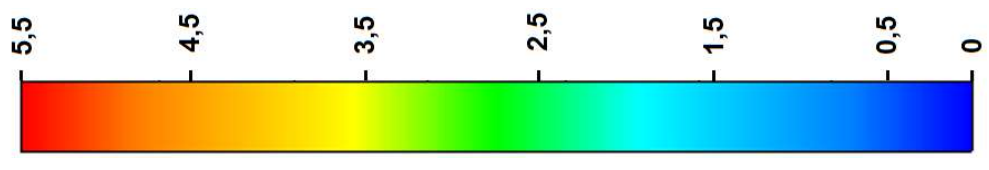
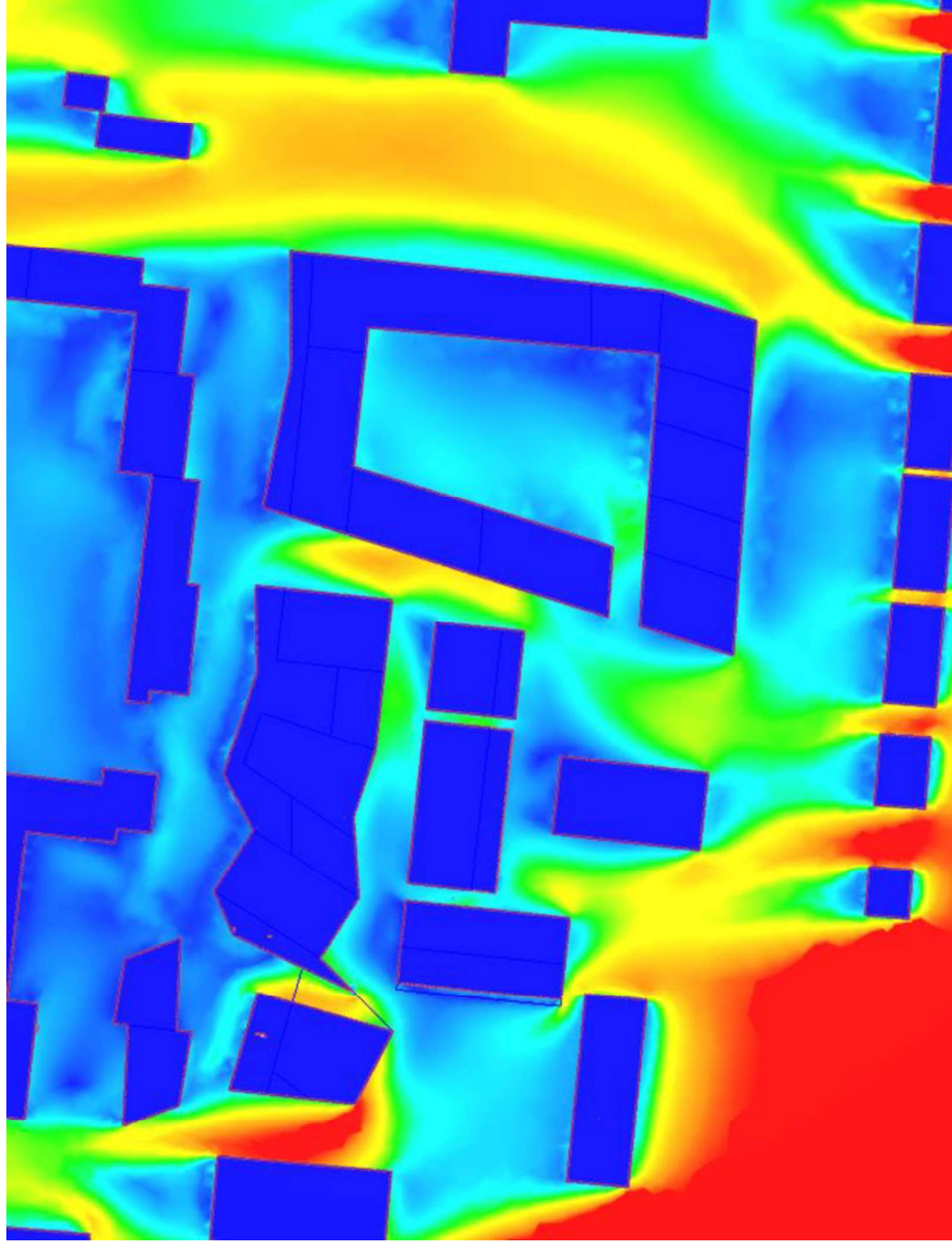
Importance of good micro climate

- Movement, medium importance
- Sitting and playgrounds, Crucial
- Sitting long periods of time, Crucial

For sitting and recreation solar access is highest priority

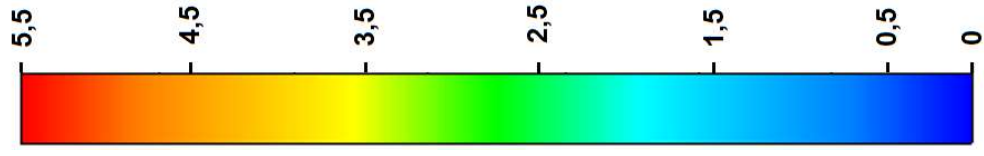
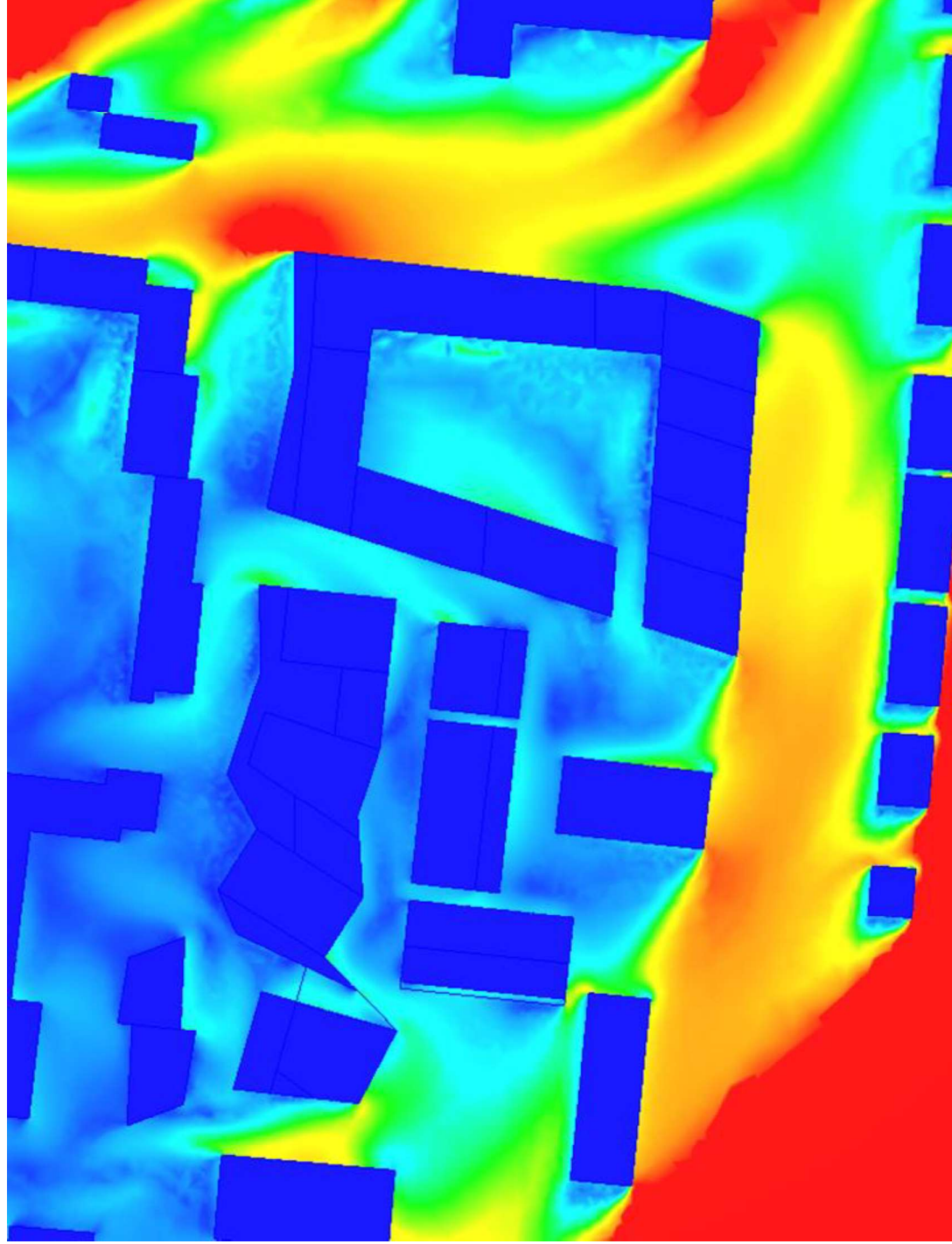


South



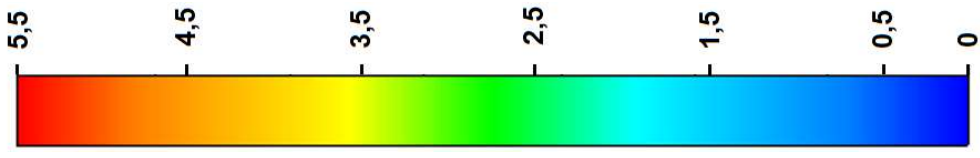
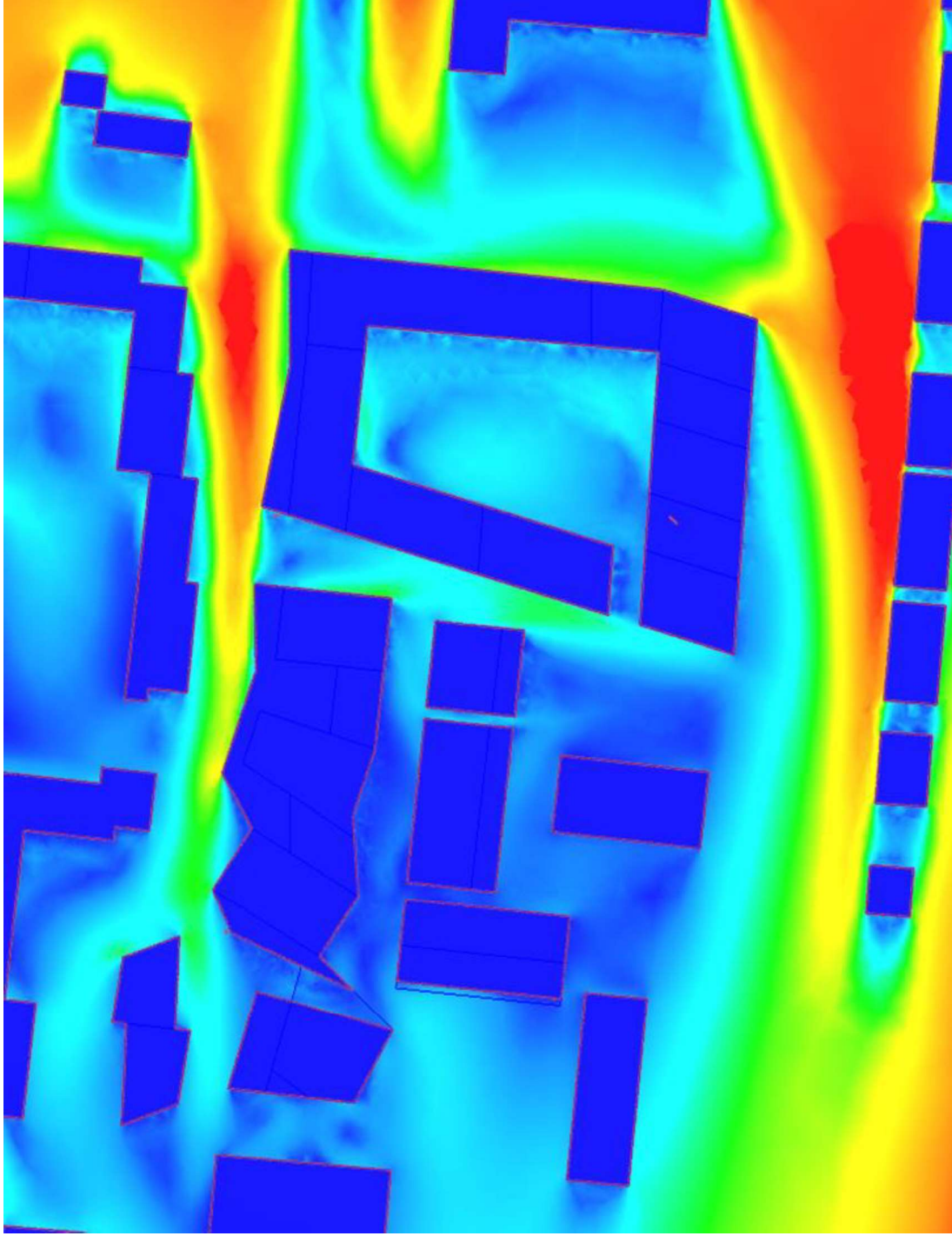
Mean vel: 6,8 m/s
Frequency: 18 %

Southeast



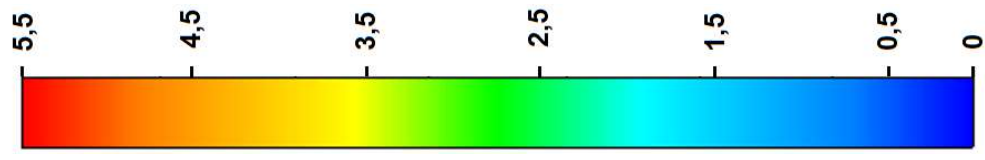
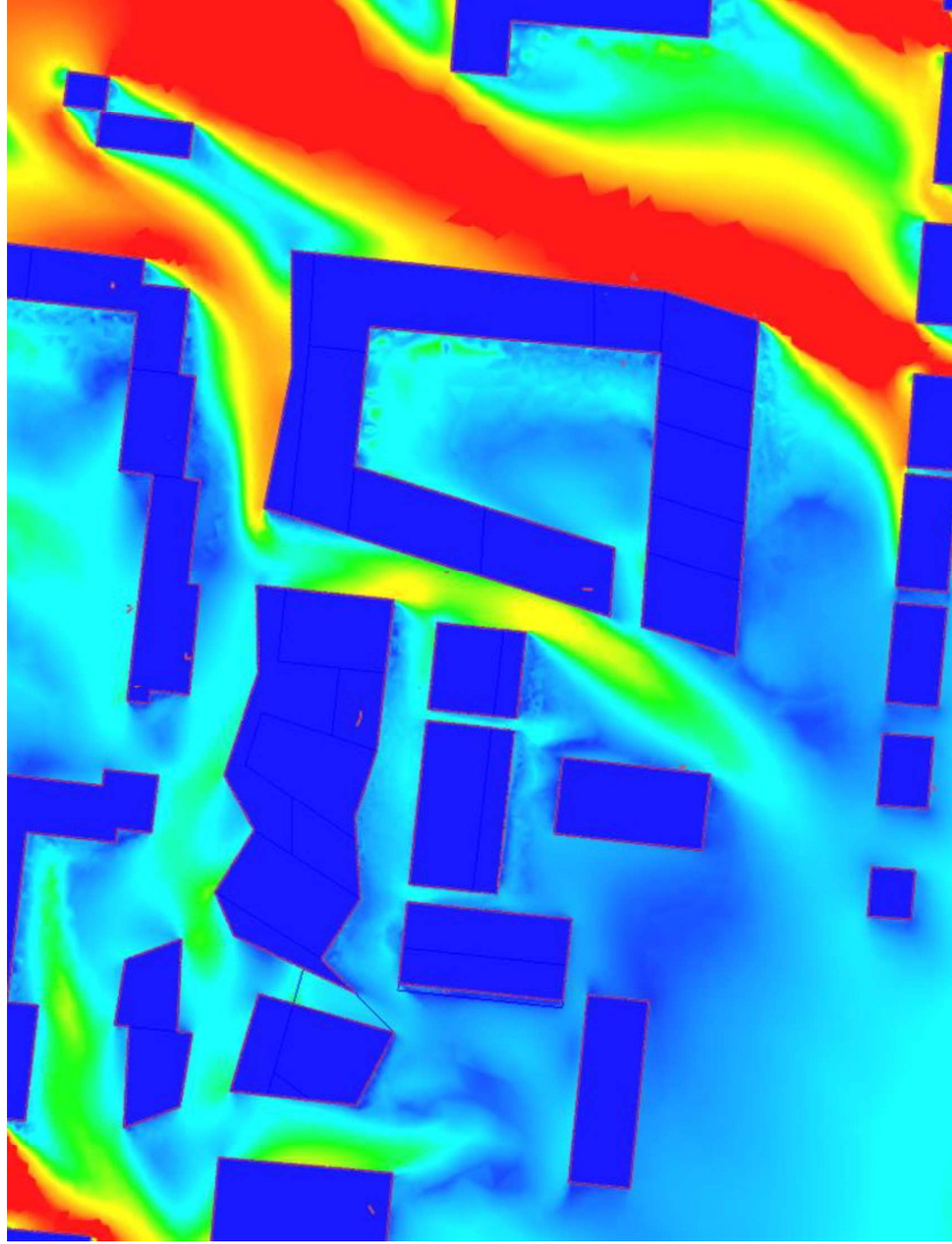
Mean vel: 6,7 m/s
Frequency: 17 %

East



Mean vel: 5,5 m/s
Frequency: 13 %

Northeast

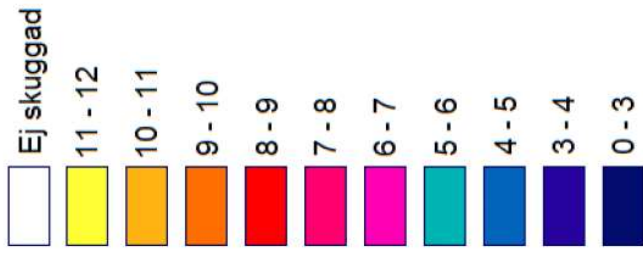


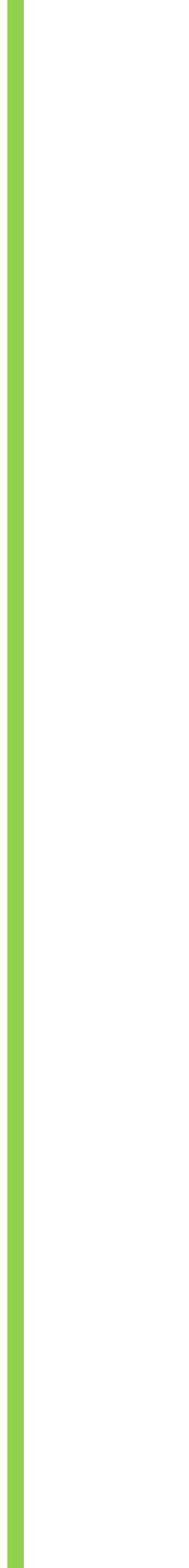
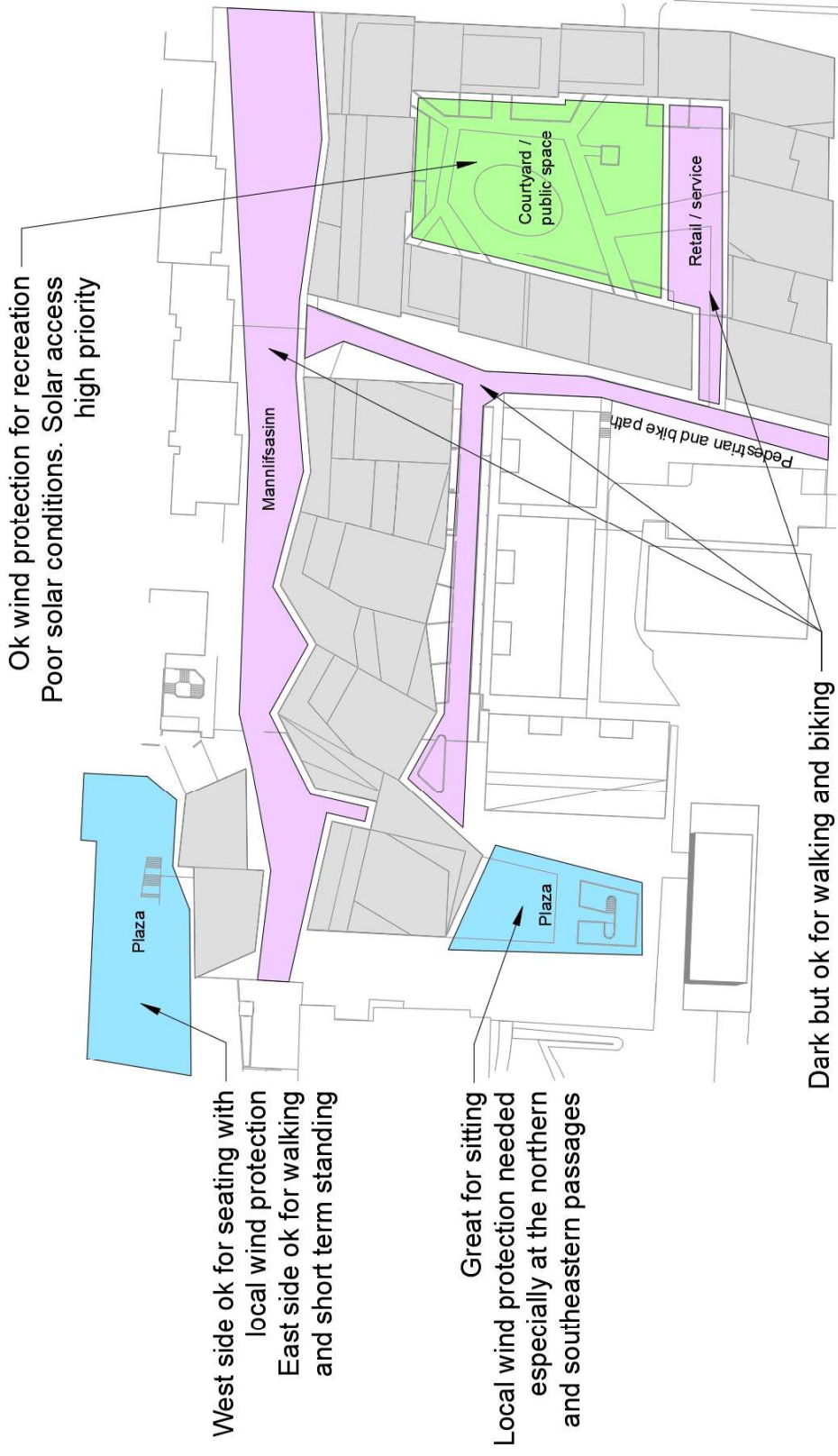
Mean vel: 6,1 m/s
Frequency: 13 %

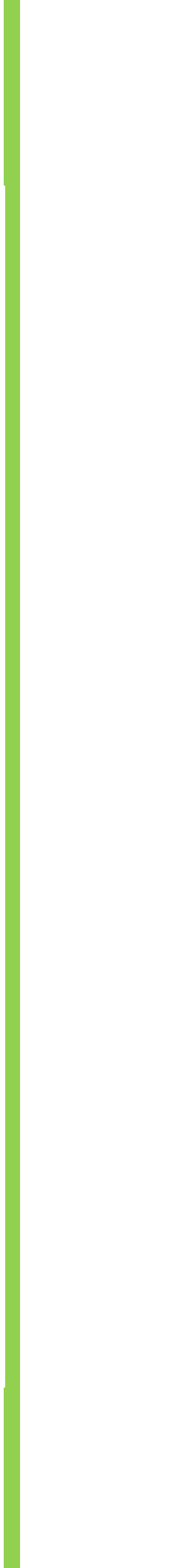
Spring equinox



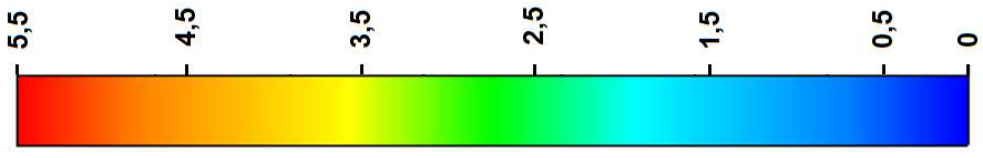
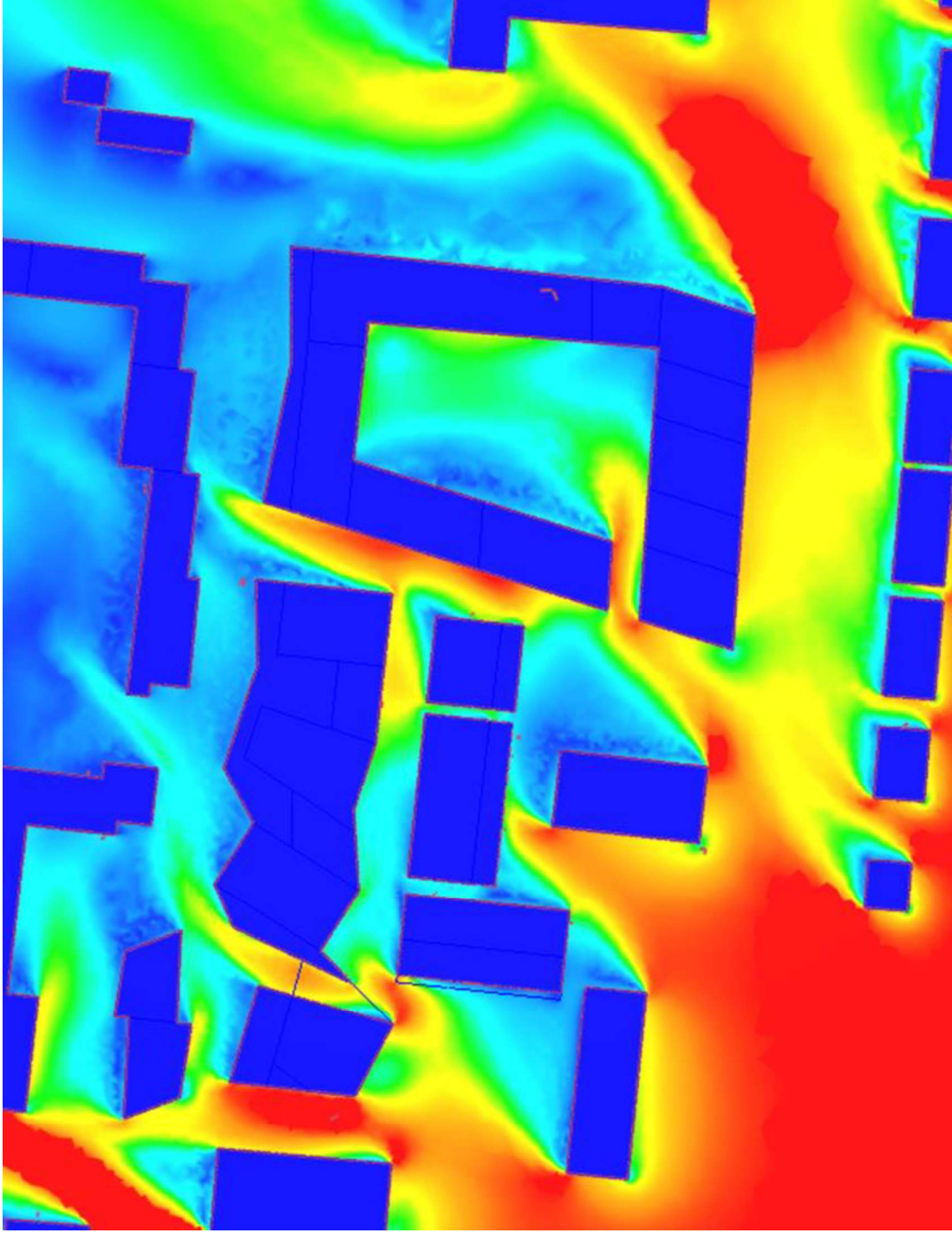
Soltimmar





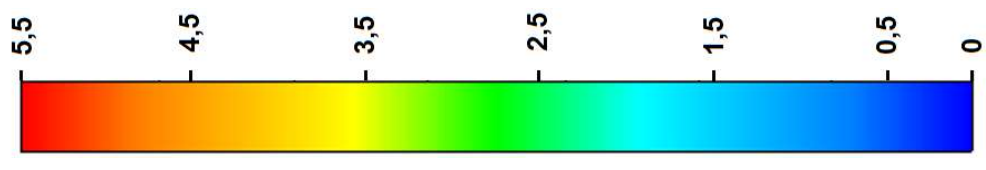
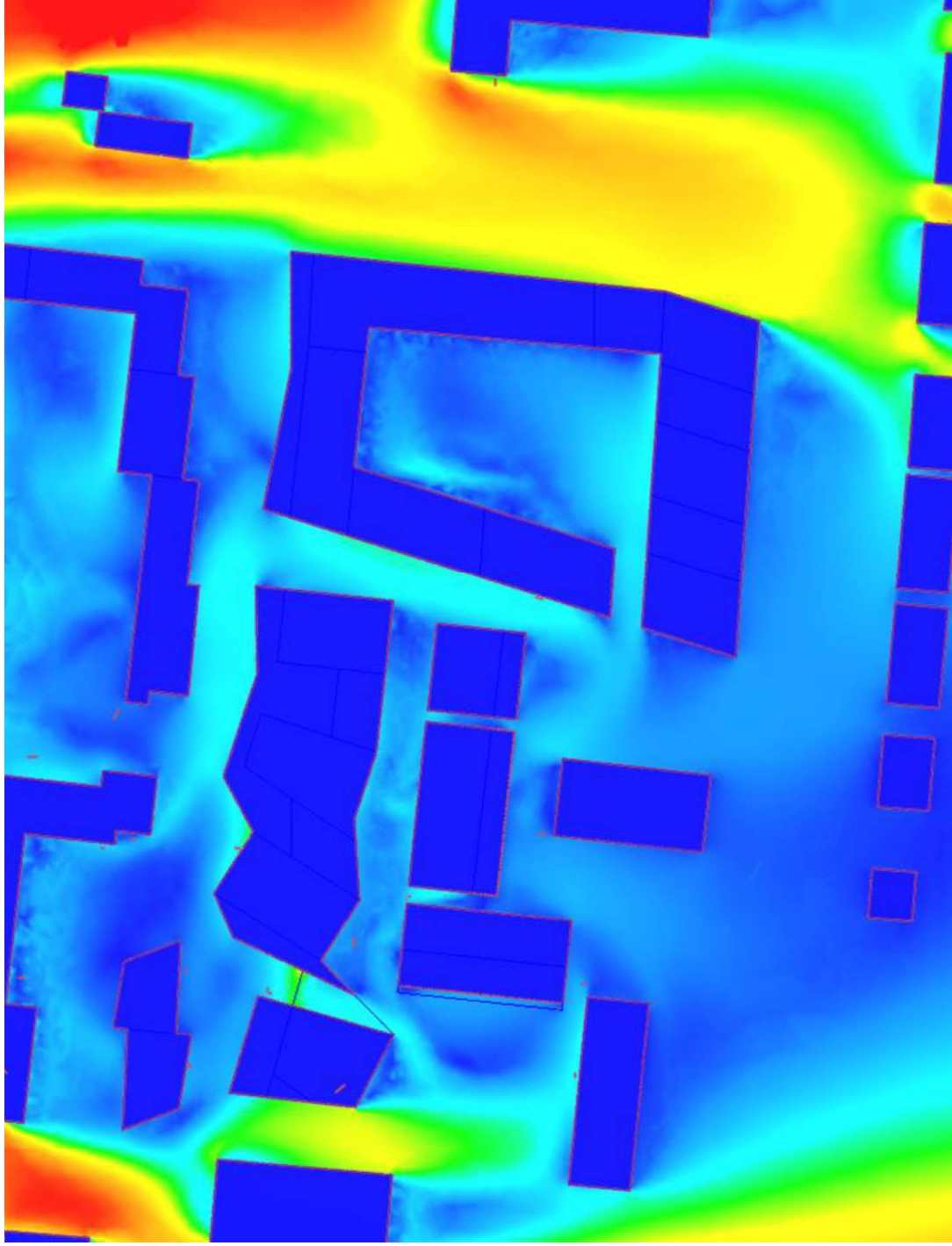


Southwest



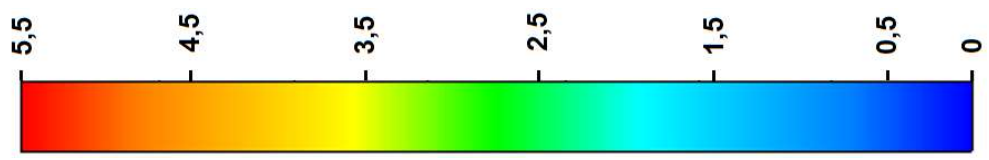
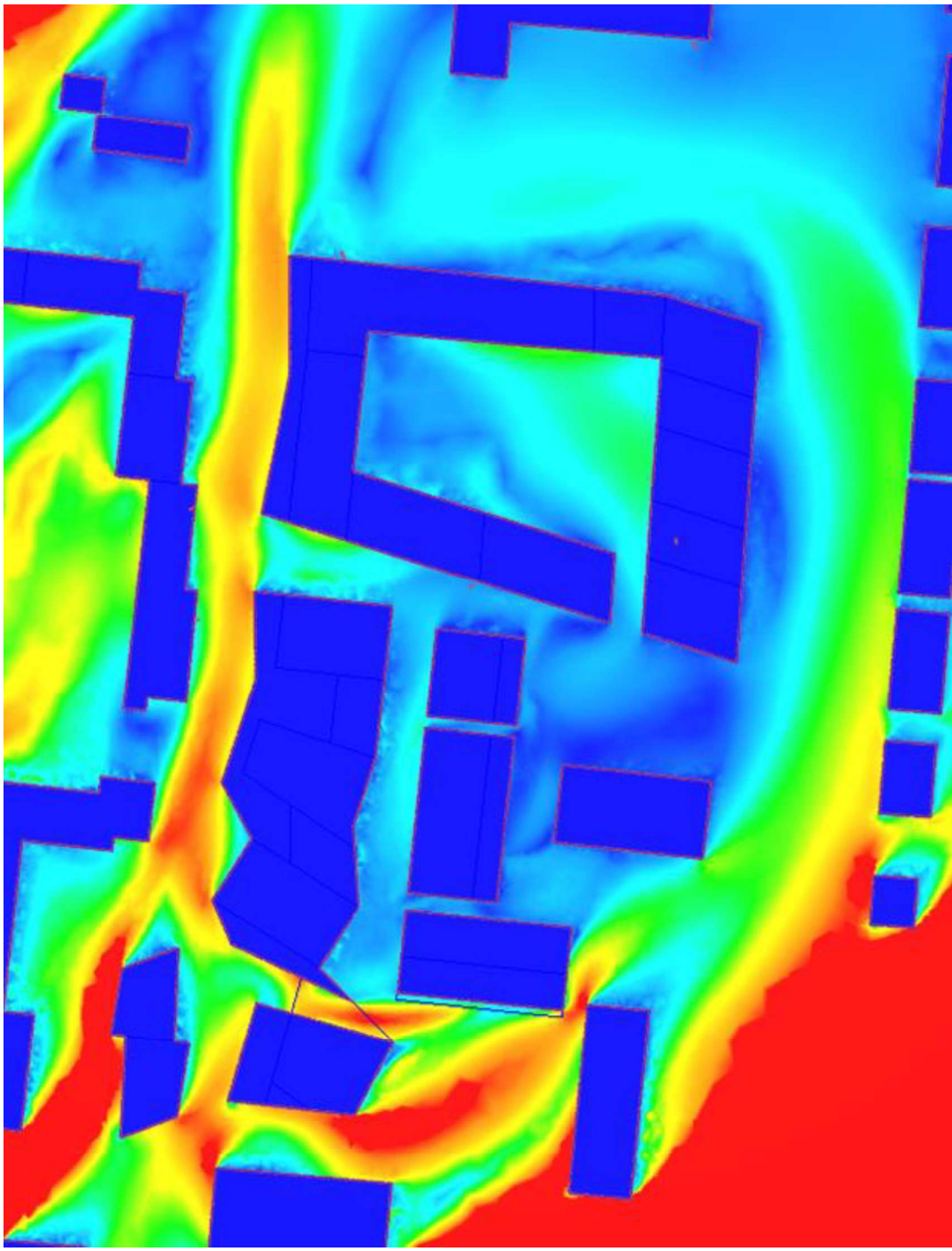
Mean vel: 6,6 m/s
Frequency: 11 %

North



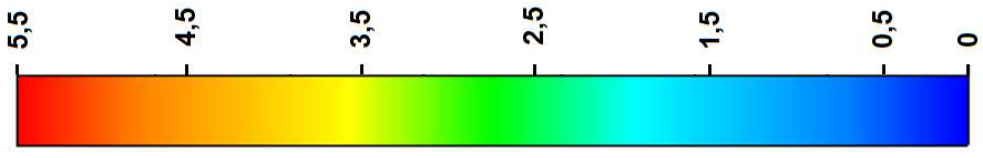
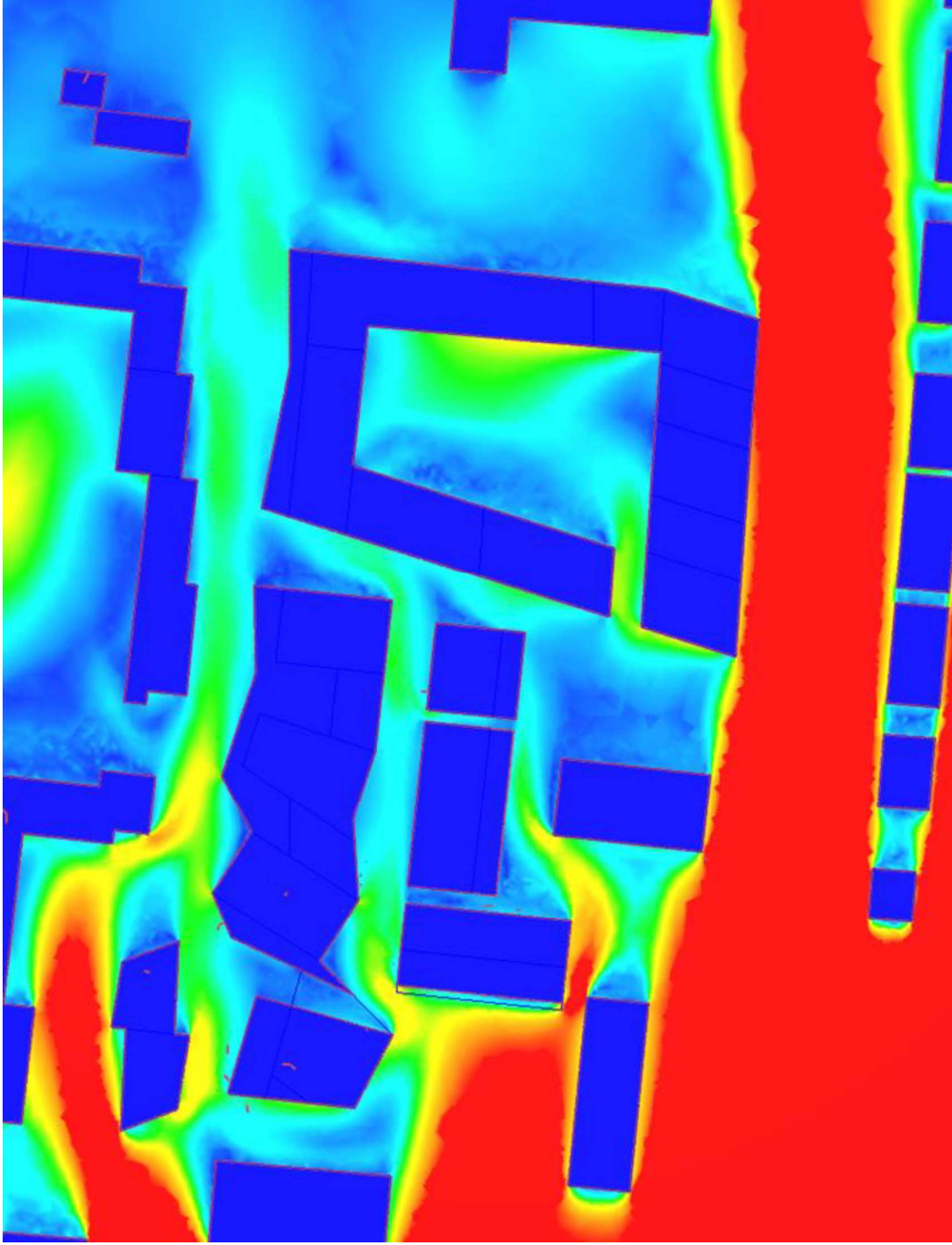
Mean vel: 4,7 m/s
Frequency: 10 %

Northwest



Mean vel: 4,5 m/s
Frequency: 9 %

West

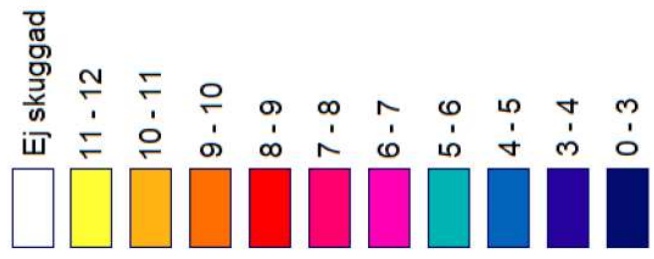


Mean vel: 6,2 m/s
Frequency: 10 %

Spring equinox

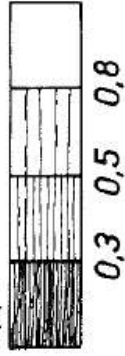


Soltimmar

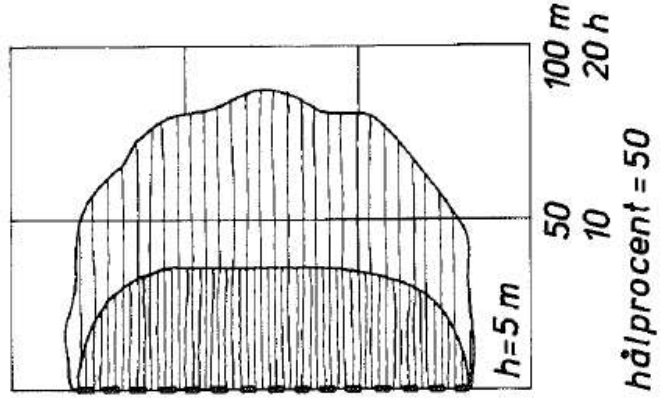
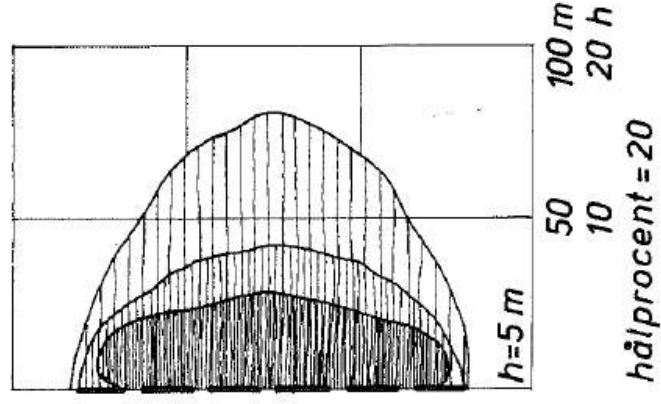
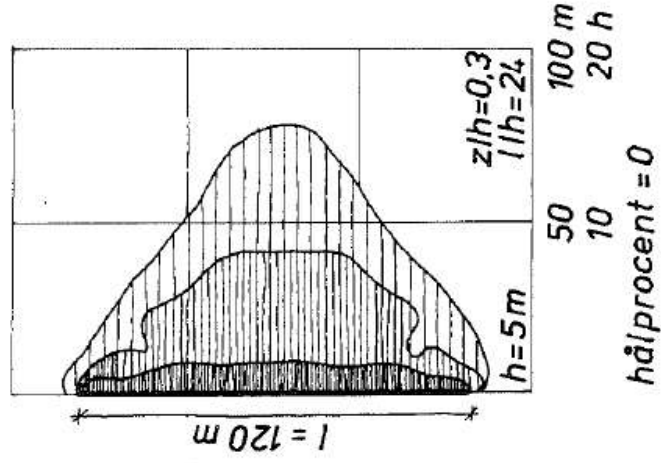


Vinddesign

Upplevd relativ vindhastighet



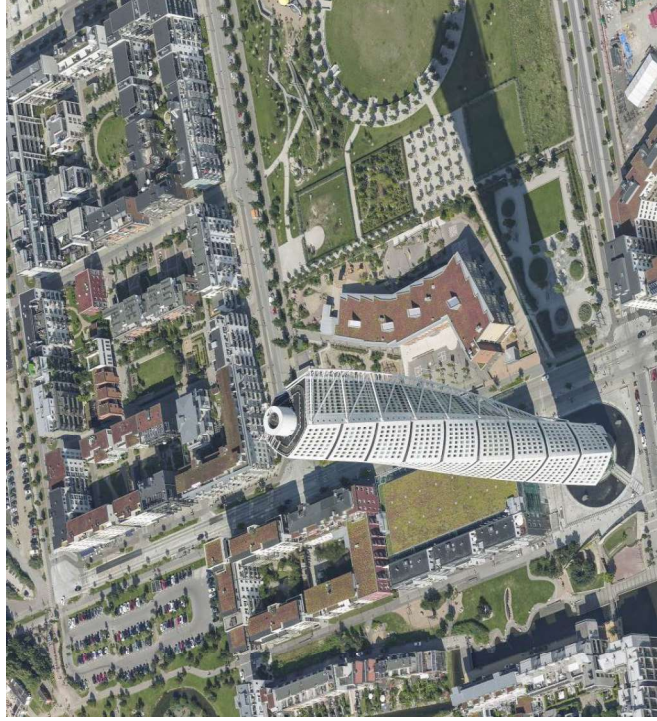
VIND →



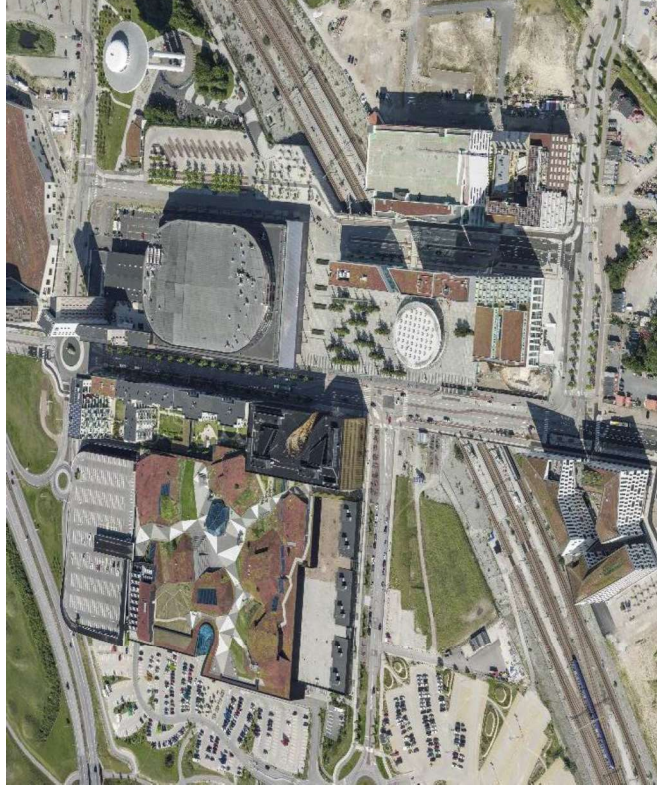
Dåliga exempel



Västra Hamnen



Hyllie



Goda exempel



Bo01



Lilla Torg

